



t h e p o i n t

The Quarterly Newsletter of Confrontation Point Ministries

Fall 2008



Katie, Phoebe and Andy Bathje.

Inside This Issue:

- Creation Restoration
 - A Day in the Life of a CP Trip Coordinator
 - Summer 2008 Overview
 - A Season of Losses
 - A Letter from Clementine
-
-

New Executive Director

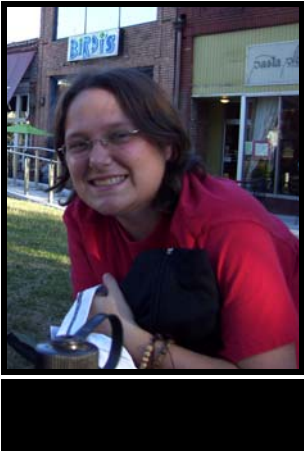
By: Andy Bathje, Executive Director

Have you ever been graciously surprised by the path God laid ahead of you? I was this past June when He turned my eyes toward this role at CP. In the winter I had decided not to continue as the Associate Dean of Leadership Development at Asbury College for the '08-'09 school year. I enjoyed my 10 years in student development and adventure programming, yet I felt led to do something "different". I wanted to motivate more people to enjoy and care for Creation. And I wanted to meet needs of people on the margins. However, finding a job that met this description took months of seeking the Lord, conversations with close friends and uncertainty.

Yet in God's timing, I was asked to fill this position. I'm amazed at how well this new opportunity fits me. It gives me a chance to practice the things I've been teaching college students – like leadership, service, adventure and spiritual growth. It also ties in my background with youth ministry, which I enjoyed – and missed. In fact, my own faith journey began on an outdoor mission trip with my youth group 20 years ago. God does answer prayers and guide our steps.

I've been on the Confrontation Point board of directors since 2003. I have seen evidence of the enriched lives of youth, homeowners and our leadership teams. But now, as the new Executive Director, I've witnessed firsthand what happens at worksites, campgrounds and around our main offices. As a result, I can't help but be passionately committed to the servant-style mission of Confrontation Point Ministries and am convinced that God's hand is in all we do!

I look forward to meeting more of you in the future. Until then, let me give you some of my "profile", as our "facebook" framework calls it. I'm originally from Wheaton, Illinois where I received a Masters in Psychology. I attended college at Bethel University in Minnesota, which means I miss snowy winters. I've been counseling young people and leading adventure activities for 15 years. I'm married to a wonderful and witty woman named Katie. The two of us have the pleasure of parenting a little princess who we met in China on MLK day, 2007. Her name is Phoebe and she is 2 years old.



Meeting God in Community at CP

By: Ashley Tackett, Warehouse Manager and Wilderness Director

As I am in the midst of finishing up the last few days of my fourth summer spent at CP, I have often asked myself why I continue to come back year after year to serve. Although each summer has held for me unique opportunities to serve and to grow, it hasn't been the jobs in and of themselves that have kept me coming back summer after summer. Instead, it has been the way CP has opened my life to acknowledge the way that God is working in and through not only my life but also in the world around me.

Each summer I am challenged to look at my life and to survey where I am in my relationship with God. I have encountered God in new and challenging ways through this ministry. I have had to learn how to rely on God to get me through exhausting weeks of running groups during my first summer to the daunting task of balancing two jobs in management this summer. Every summer, I have to get to the end of myself, so I can

truly put my faith where it belongs. The realization of this usually occurs due to conversations had with other CP staffers. The community at CP is another testament to the way God designed us to be relational.

Not only do we spend our summers serving youth, homeowners and various other ministries, but we also learn to love and serve one another. The friends I have made at CP over the years have been lifelong friends, who always challenge me to step beyond mediocrity and to wholly serve. It is hard to spend a summer at CP, and not be touched by the world around us. Spending time in campgrounds, in caves, or swimming in a local waterhole push one to grow in appreciation of what God has given us and to be good stewards of those things. These times I have been immersed in God's creation and in relationships with others have revealed to me a glimpse of who God is.

"The friends I have made at CP over the years have been lifelong friends, who always challenge me to step beyond mediocrity and to wholly serve."

A Season of Loss

By: Andy Bathje, Executive Director

Much has changed for this uniquely influential ministry in the past year. We have experienced difficult losses and often find ourselves reminiscing.

In the fall of 2007, due to budget belt-tightening and challenging programming logistics, we sold Camp Obed, the base for our staff lodging. It was a practical move with clear benefits, but this does not erase the fond memories we have of the land and its surroundings.

Also in 2007, David Abrami, a trusted board member of CP was killed tragically. It was a harsh reminder that this life is temporary. David gave unselfishly to the mission of CP, and is missed beyond measure. To learn more of our dear friend, go to www.davidjabrami.com.

And then, an unspeakable loss befell us in February of 2008. Jason Young, our Executive Director died suddenly and unexpectedly in his home of a heart attack. The sadness felt in his absence is beyond words. It was clear from the testimonies at Jason's funeral that the Lord had used him to challenge and transform so many lives.

We thank God for the "Jesus" we knew by knowing Jason. We also praise Him for the countless ways we have been comforted by the larger CP community. Jason's wife, Joy continues to serve as full-time program director and their baby daughter, Abigail keeps us all smiling, as we see Jason in her eyes daily. As a new member of the CP staff, I've been encouraged by the ways we've grieved together as authentic Christian community and at the same time celebrated Jason's life by enjoying stories of his unique and passionate personality.

We covet your prayers as we continue to mourn the losses we've experienced and adjust to the changes ahead.



Jason Young, Former Executive Director

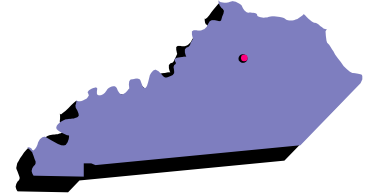
CP Headquarters On The Move

By: Andy Bathje

As we've assessed the purpose and programs of our ministry, we've recognized that we are a "virtual camp." We are a "camp on wheels," meeting groups within a 200 mile range at campgrounds nearest to those we will serve and the adventures we will have during the trip. The "point" is not the *places*, but the *journey* that our participants will take as they turn faith into action.

In light of reviewing our mission, we've decided to move the headquarters of CP to Wilmore, near Lexington, Kentucky. There are multiple benefits of this move, which include staff recruitment from colleges and universities in the area, and expanded programming into Kentucky's rural and urban populations where many are struggling in today's economy. While maintaining programming in Tennessee, we hope to add more places where teams of youth are transformed into servant-leaders through missions and adventure.

So you will notice a change of address in the future and some of our programming areas will be different. What will not change is our commitment to connecting young people to others in need, the glory of nature, their own potential and a relationship with our Lord.



"The LORD God took the man and put him in the garden of Eden to work it and keep it."

Genesis 2:15

New Trip Option: Creation Restoration

By: Andy Bathje

In his book, Serve God, Save the Planet, Dr. Matthew Sleeth challenges Christians to be leaders in caring for Creation. He explains it as a tangible way to be a "Good Samaritan" to others who rely on the earth's resources, as well as an opportunity to grow closer to our Creator as we live simpler lives.

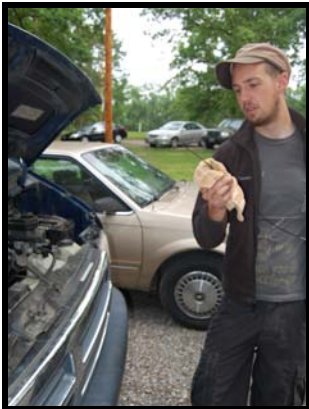
Matthew is a close friend to Confrontation Point Ministries and is encouraged by the many ways we practice environmental stewardship in our traditional mission experiences. Next summer, we will be introducing a new service week called Creation Restoration that will focus primarily on this Christian responsibility. This trip will give youth the opportunity to take "being green" to the next level through service that fulfills the Genesis 2:15 command.

Similar to other CP programs, participants will go on wilderness adventures, giving them a chance to appreciate the intricate world of the Creator. They will also spend at least three days restoring Creation – projects may include cleaning up watersheds, building trail systems or managing recycling campaigns for large public events. Our staff will guide the group through a Creation-care curriculum which makes the connection between environmental stewardship, service to others and Christian witness.

As many of you know, Confrontation Point creates unique life-changing mission trips like few other organizations. The Creation Restoration week is one more example of how CP applies the full potential of youth to the relevant needs of our communities.



Packing out trash found in the woods.



Wes McChristian Completing A Daily Vehicle Check

A Day In The Life

By: Wes McChristian, Wilderness Coordinator

It is the final week of the season, and the dull beep of the alarm on my watch has grown wearisome. It is 6:45 and I need to get my campers awake so that we can eat breakfast by 7:15. I am exhausted; to put it bluntly. This exhaustion is only matched by the overwhelming feeling that my group has high expectations, and it is my responsibility to meet those expectations, to challenge the youth, and to be sure that each and every individual on this trip grows emotionally, physically, and most importantly, spiritually.

As soon as breakfast is finished, it is important that we move quickly so that we can get in a full day of climbing. This group has been looking forward to climbing and rappelling all week. The sky looks ominous, but I have given the go-ahead to continue the activity. The youth leader seems skeptical but remains flexible. While we walk out to the Stone Door, we stop and I give them a safety talk and look forward to collecting as many milkshakes as possible from individuals who dare to step on the rope right in front of me.

Surprisingly, the day progresses extraordinarily well, and I begin to feel comfortable with the dark clouds looking over my shoulder.

The day presses on and the rain continues to hold off and almost literally, as soon as the last camper has finished with his rappel the Gulf fills with the echo of thunder. Rain can be seen in both the East and West sides of the gorge, and it seems to be converging on us as though to envelope us.

We quickly make it back to camp with enough time left in the day to pile into the vans and go swimming. During debriefing, we marvel at the ability of the Lord to hold back the storms even though they surrounded us for the entire day. And while the campers close out the day in prayer, I silently muse about how much this group has grown through the week. At the beginning of the week they could hardly make a decision together and throughout this experience they have become a unit that takes individual opinions into consideration and uses them for the greater good of the group.

Youth group after youth group has come through Confrontation Point this summer, and I have had every type of group imaginable: Christian Reformed, Methodist, Baptist, easy-going, high-maintenance...you name it. Not only is it my job, but it is my pleasure to pour myself into these groups; to model service, to demonstrate leadership, and to exemplify Christ.

"...it is my pleasure to pour myself into these groups; to model service, to demonstrate leadership, and to exemplify Christ."



Ready to rappel!

The Summer In Numbers

2008 Summer Staff	23
Service Agency Partnerships	26
Projects Completed By Our Home Repair Participants	58
Evening Worship Services	225
Total Number of Participants	846
Hours of Service	20,888
Money Raised To Repair Homes	\$34,600
Height Rock Climbed (In Feet)	39,000
Lives Touched	Countless

Vehicle Rescue Campaign

Dear Pedestrians,

I have worked for Confrontation Point for over a decade, ever since I was "let go" from a corporate fleet. They said it was because I had "too many miles under my belt". Looking back, I'm glad. My CP friends treat me like a heavenly chariot! The staff take such good care of me, checking my fluids after each trip and paying attention to my occasional problems – some of these college kids learned what a dipstick was under my hood!

Oh and the things I get to help with make me so proud! Sure all my seats are pulled out, but you should have seen all the lumber I carried over to a Ms. Meridith's home last week to build a handicap ramp to her door! I'm amazed at all the stuff they pack into me to feed groups of youth, provide shelter at campsites and inspire people to serve God. I really feel like I've made a difference by carting all these things to so many places!

Thing is, I can't do this forever. My odometer broke at 238,000 miles, and that was five years ago! Only one of my windows work and nobody trusts my door locks. I look awful, in fact, I got pulled over once because I was mistaken for a drug dealer's van! It seems every week someone's hearing a new squeak from me. Fortunately the mechanic checks my brakes regularly, otherwise, I'd be really worried.

I need you to help. It's time for me to retire. Sure, I may re-enter the market some day in another "form," but I have to put it in park with CP, if not forever. That's why we need you to chip in to find my replacement. There's others too, who are heading for that glorious scrap yard like Smoke, Patty Wagon, Moonshine, Roscoe and MeeMaw.

Please give some middle-aged automobiles a chance to have a better life (like I've had) by giving money this year to the "Vehicle Rescue Campaign".

*Letting my rubber hit the road,
Clementine*



Clementine's Replacements

Yes that's right, we need to give these beloved old vehicles the rest they need and rescue some "experienced" vehicles ("used" is such a derogatory term) from their commuting lives of mediocrity so they can drive toward a greater cause.

Our goal is to replace up to ten vehicles by next summer. A CP alum has offered to assist in finding and fine-tuning "experienced" vehicles to meet our purposes. The cost of each replacement vehicle would be approximately \$2,500. This means we need to raise \$25,000 to meet the Vehicle Rescue Campaign target. Please help us in "recycling" some vehicles and replacing the ones we've got. If you can't give money, we will take donated cars, trucks or vans!

A Note From Joy

By: Joy Young, Program Director

As I'm sure you can imagine, this year has been extremely difficult for me as I mourn the loss of my beloved husband Jason, adjust to the challenges of being a new mom, and continue working for the ministry. Despite the many difficulties, I am amazed by the outpouring of love and support from the CP community. From prayer, to cards and letters, to financial support and help finishing our home remodel, I have been continually blessed by those connected with Confrontation Point.

I know some of you are probably wondering what my future plans include. After much prayer and consideration, I have decided to continue working at CP for at least another year. After six years working full-time at CP, I still have a heart and passion for the ministry, and I am excited to see what God is going to do with CP through all of the transition.

Since I am remaining with the ministry, Abigail and I will be moving to Wilmore, KY when the office moves later this year. We appreciate your continued thoughts and prayers as we move our home and start our lives in a new community, and we want to say thank you to all of you who have supported us during this difficult year.



Confrontation Point Ministries
 PO Box 572
 Crossville, TN 38557-0572

Phone: 800-884-8483
www.ConfrontationPoint.org

Non-Profit
 Organization
 US POSTAGE PAID

 Crossville, TN
 Permit #49

the point
the quarterly newsletter of Confrontation Point Ministries